



features & benefits

The EFEX 28"W x 35"H panel panel system is a light-weight, fabric covered tabletop display at real "value for money" prices. The 2802 model features an additional 12"H, full width header. The 2801 model offers a three-in-a-line panel configuration. Panel kits are available in a choice of three basic fabric color combinations: Red/Black, Blue/Grey or Red/Blue (custom fabric colors or custom sized panels are available on quantity orders). Bag included.

2801 Three panel kit: EFX-2801

2802 Three panel kit with header: EFX-2802

hardware specifications	graphic specifications	additional info
	28" x 35"	Shipping weight: 22 lbs. Shipping dim: 37"x30"x10"

Assembly Instructions

1



Remove the carrying case containing the display from the corrugated shipping box. Unzip the case and insert your fingers at either end of the panel to pull up and remove the unit from the case. It is a good idea to save the corrugated cardboard box for future shipping/storage needs.

2



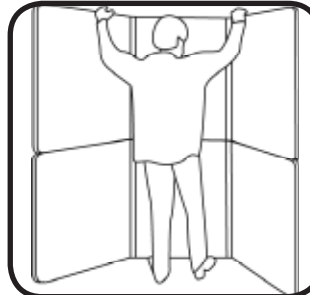
Lift the middle section panel into position, matching the angle of the lower panel. Working your way from one side, push the upper panel on to the stack tabs, forcing the upper half of the tab inside the groove of the upper panel.

3



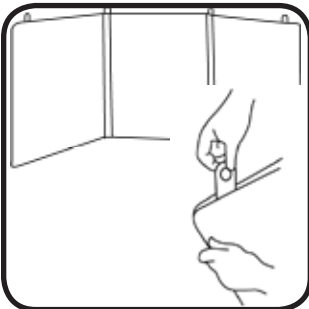
Locate the Stack Tabs, They are usually placed in the inside pocket at the top front of the case. Depending on your order, you may have none, one or more sets. For 3-Panel displays each set has 4 tabs, for 4- Panel, 6 tabs, more for others. Keep the small plastic bags that the tabs come in for your packing convenience.

4



Once all stack tabs are aligned with the lower section, place both hands on top of the upper panel and pull down firmly until it fits snugly over the bottom.

5

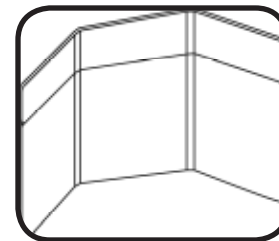


Open up the folded panel. It should stand on its own; side panels angled in as needed. Usually, the more the side panels are angled in, the easier it will be to stack the upper panels. Insert the stack tabs in the base panel at the locations shown at left. Note the stack tabs go right into the groove of the panel. Stack tabs may have to be "worked into" the edge grooves when the panel is new; it will get easier as the system is used. Be sure to insert the two inner location tabs at the hinge grooves. This will keep the panels properly aligned.

6



Place another set of stack tabs in the same locations on top of the middle section. Depending on your height, you may require a chair or a small stool for this step and the next two.



CARE & MAINTENANCE

Your exhibit is designed to be used indoors. If the exhibit is to be used outdoors, take care and protect it. Wind might blow it over and water will damage it. If the nap of your fabric becomes "ruffled", simply use a nylon brush to restore the ruffled area to its original smooth texture. To remove minor dirt or stains, use a damp cloth to wipe it off. Never use excessive water, for water will damage your display